
Dansk Geoteknisk Foreningsmøde nr. 1. 2025

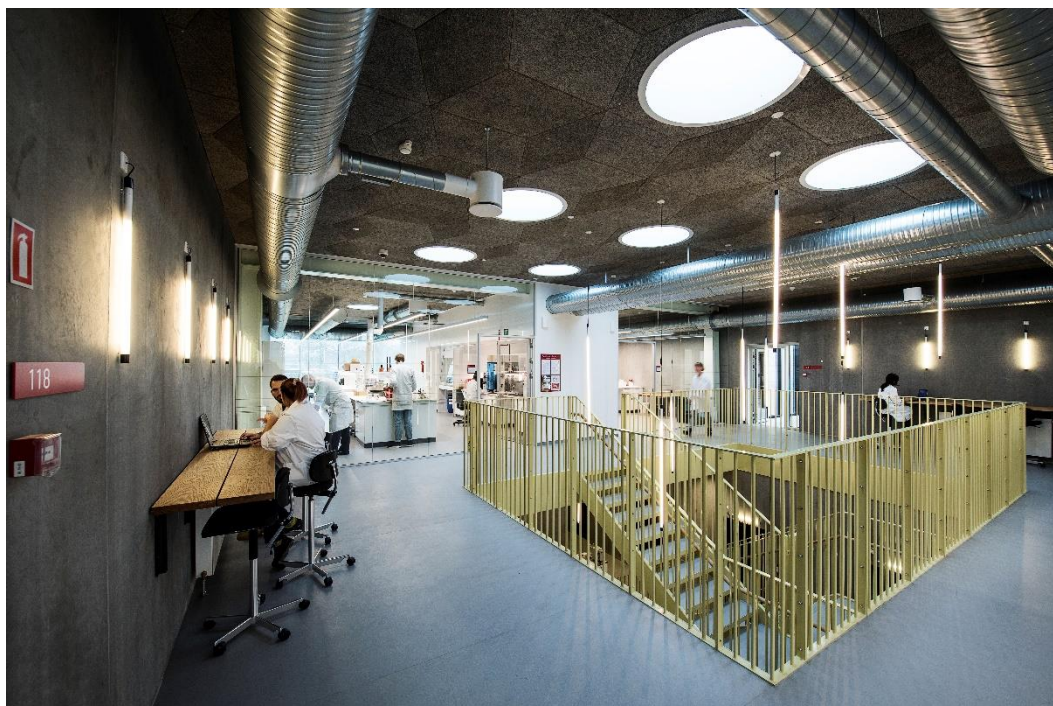
Thursday 27th February 2025, 14:30 – 20:00

TECHNICAL UNIVERSITY OF DENMARK (DTU)
Department of Environmental and Resource Engineering
DTU Campus, 2880 Kgs Lyngby
Building 341, Auditorium

6th DANISH GEOTECHNICAL RESEARCH SEMINAR

The Section for Geotechnics and Geology within DTU's Department of Environmental and Resource Engineering (DTU Sustain) is hosting the Danish Geotechnical Society's 6th Annual Research Seminar. The seminar is open for members of DGF as well as external partners and students.

Join us this day to hear more about ongoing and recently completed research and student projects within Geotechnical Engineering at the Universities in Denmark. Many of the projects have been carried out in collaboration with industrial partners. In addition, there will be time for networking, and before the official program starts there will be an opportunity to get a tour around DTU's Soil Mechanics and Rock Mechanics laboratories.



The fee for participation is **DKK 530, incl. VAT** for both members of the Danish Geotechnical Society and non-members. **Students and senior citizens participate for free.** The seminar includes dinner and coffee.

Register for the seminar at <https://danskgeotekniskforening.dk> for both members and non-members (please remember to include details of invoicing, DGF members need to log-in to ensure correct registration) no later than **Thursday 20th of February 2025**.

Program

- 14.30 – 15.45 **Lab tour** (Meeting place: Auditorium 21, building 341)
- 16.00–16.05 **Official start - Welcome by DGF and DTU** (Auditorium 21, building 341)
DGF / Thomas Rye Simonsen
DTU / Varvara Zania
- Research Presentation Session 1** (Auditorium 21, building 341)
- 16.05–16.15 Presentation of the DGF Sustainability Committee and information about the Sustainability Grant to promote sustainable geotechnical solutions
/ Morten Anker Jørgensen, DGF Sustainability Committee
- 16.15 – 16.30 Development and distribution of unit shaft resistance of bored piles in high plasticity clays
/ Jannie Knudsen, Industrial PhD student, COWI A/S and AU
- 16.30 – 16.45 Metro-station construction in CPH: induced ground movements and risk assessments
/ Andrianna Hernandez, Industrial PhD student, Arup A/S and AU
- 16.45 – 17.00 Sustainable Geotechnical Solutions for Offshore Wind Infrastructure
/ Amin Barari, AAU
- 17.00 – 17.15 Title to be announced
/ Lars Bo Ibsen, AAU
- 17.15 – 17.30 **Short break**
- Research Presentation Session 2** (Auditorium 21, building 341)
- 17.30 – 17.45 The Dynamics in and Around Sheet Piling Anchors: An Outline of a Ph.D. Study
/ Janni Alrum Jørgensen, SDU
- 17.45 – 18.00 An investigation into the impact of data quality from piezocone testing on design and material usage
/ Irene Rocchi, DTU
- 18.00 – 18.15 Towards a digital twin concept for underground constructions
/ Varvara Zania, DTU
- 18.15 – 19.00 **Dinner** (Canteen, building 342)
- 19.00 – 20.00 **Networking session and student presentations. Coffee and cake** (Canteen, building 342)

Adresse
Maglebjergvej 1
DK-2800 Kgs. Lyngby

CVR-nr.
62 16 09 18

Telefon/e-mail
+45 45 20 41 29
dgf@geo.dk

Bank
4190-7104081
Danske Bank

Poster presentations

DTU:

A preliminary investigation of fungal-bound granular materials for pavement infrastructure (Yike Yin and Eyal Levenberg)

Laboratory analysis of asphalt grid reinforcement effects (Marian-Alexandru Radu and Eyal Levenberg)

A digital twin concept for civil infrastructure with application to asphalt pavements (Eyal Levenberg)

A novel device for performing direct shear of rooted soils from pot-experiments (Gianmario Sorrentino).

A quantification of uncertainties in the determination of the angle of shearing resistance from direct shear tests. (Gerald Innocent Otim).

Aggregate formation in willow's rooted sand. (Alena Zhelezova).

In-situ characterization of concrete pavement based on fiber optic sensing (Marta Ricci)

Characterization of lime stabilized clay till (Maria Storm and Mikkel William Grebin)

Swelling of high plasticity clay subjected to chemical and electrical gradients (Emil Mejlhede Kinslev)

Sustainability assessment for temporary retaining structures (Efthymios Panagiotis)

AU:

Assessment of slope stability at the coastal area of Mørkholt (Mads Roholm & Gustav Krogh)

Sustainable utilisation of soft soil - Yield and strength envelope of cement stabilised Gytja (Kenny Sørensen)

Probabilistic risk assessment of buildings close to deep excavations based on analytical models (Peter Villadsen & Sebastian Rosleff)

Semi-analytical solution for 3D tunnelling induced ground movements (Ali Jasim Ali & Simon Ehlers)

Shared Anchors restraining floating wind turbines: Integrated analysis and a geotechnical design methodology (Nikolaj Bjerger)

Shared Anchors restraining floating wind turbines: Innovative anchoring solutions (Lau Fogh)

Adresse

Maglebjergvej 1
DK-2800 Kgs. Lyngby

CVR-nr.

62 16 09 18

Telefon/e-mail

+45 45 20 41 29
dgf@geo.dk

Bank

4190-7104081
Danske Bank